

NC Soil & Water Conservation Commission Cost Share Programs

Julie Henshaw, NPS Section Chief

NCDA&CS Division of Soil and Water Conservation



Cost Share Programs

- ▶ Agriculture Cost Share Program (ACSP)
- ▶ Conservation Reserve Enhancement Program (CREP)
- ▶ Community Conservation Assistance Program (CCAP)
- ▶ Agricultural Water Resources Assistance Program (AgWRAP)



Program Implementation

Locally Led Conservation

- ▶ Delivered through 96 local soil & water conservation districts (SWCDs)
- ▶ NC Soil & Water Conservation Commission
 - ▶ Sets statewide rules and policies
 - ▶ Allocates funds to local SWCDs
- ▶ Local districts
 - ▶ Set local funding priorities,
 - ▶ Receive and rank applications,
 - ▶ Develop conservation plans and design practices
 - ▶ Oversee and certify BMP implementation



Funding availability

- ▶ ACSP– Counties are allocated funding each year.
- ▶ CREP – Continuous signup
- ▶ AgWRAP – Funds are available in two ways
 - ▶ funding is allocated to counties
 - ▶ Competitive regional application process for selected BMPs
- ▶ CCAP – Competitive application process

Contact your local soil and water conservation district office!

www.ncagr.gov/SWC/findyourdistrict.html



NCDA&CS Division of Soil & Water Conservation

www.ncagr.gov/SWC


919-707-3770



NC Conservation Reserve Enhancement Program

- ▶ enroll Environmentally-sensitive farmland and marginal pastureland into long term agreements to restore and protect riparian buffers and wetlands.
- ▶ No ranking – first come, first served





North Carolina Department of Agriculture & Consumer Services

Conservation Reserve Enhancement Program

About CREP

CREP is a voluntary program utilizing federal and state resources to achieve long-term protection of environmentally sensitive cropland and marginal pastureland. These voluntary protection measures are accomplished through 10-, 15-, 30-year and permanent conservation easements. For more information: [CREP Home](#)

Select Location

Search Method

☒ Address ☐ Coordinates ☐ County

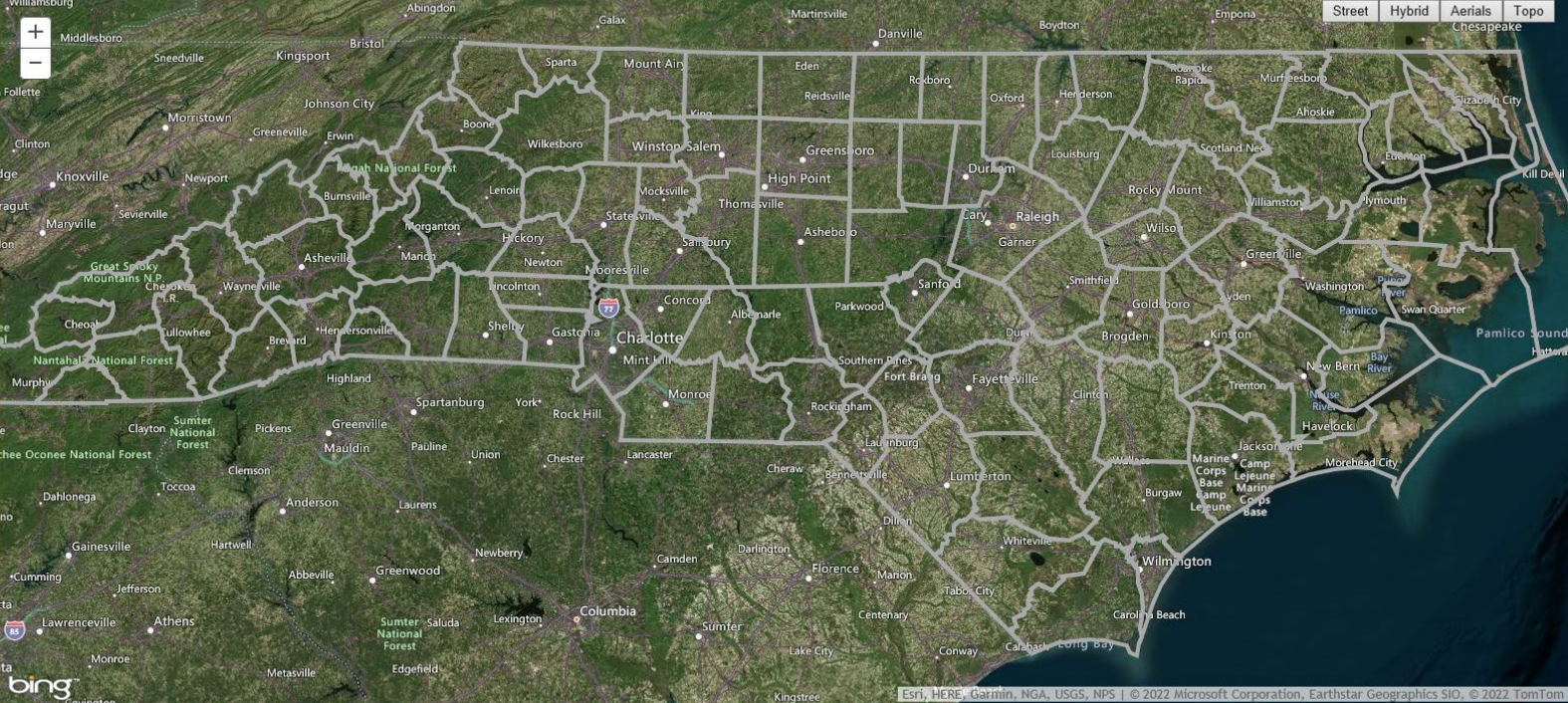
Enter Address or Area of Interest

Reset Map

*** At any point you can drag and click on the map to select your location.**

How to Use

1. Select the method to search for your property by clicking on one of the radio buttons in the 'Select Location' window. You can search by street address, latitude/longitude coordinates or by zooming into the county of the property.
2. Click on the map with the left mouse button to select the property, if needed left click and hold to drag the map view or use the plus and minus buttons in the upper left of the screen to zoom in/out of the map.
3. Click the 'Select Location' button when you have located your property.
4. Fill out the form with your contact information in the 'Enter Your Information' window.
5. Click 'Submit' when all of the required fields have been entered.
6. Thank you for your interest in the CREP program, someone will contact you shortly.



Map of North Carolina showing county boundaries and major cities. The map is centered on the Charlotte area. The map is interactive, with a search bar and zoom controls in the top left corner. The map is titled 'North Carolina Department of Agriculture & Consumer Services Conservation Reserve Enhancement Program'.

Map controls: Street, Hybrid, Aerials, Topo

Map data: Esri, HERE, Garmin, NGA, USGS, NPS | © 2022 Microsoft Corporation, Earthstar Geographics SIO, © 2022 TomTom

NOTICE:

Every effort has been made to ensure the accuracy of information, but errors and conditions originating from physical sources used to develop the database may be reflected in the data supplied. The requestor must be aware of data conditions and ultimately bear responsibility for the appropriate use of the information with respect to possible errors, original map scale, collection methodology, currency of data, and other conditions specific to certain data. This Map Viewer is developed by NCDA&CS EP.

Eligible Practices



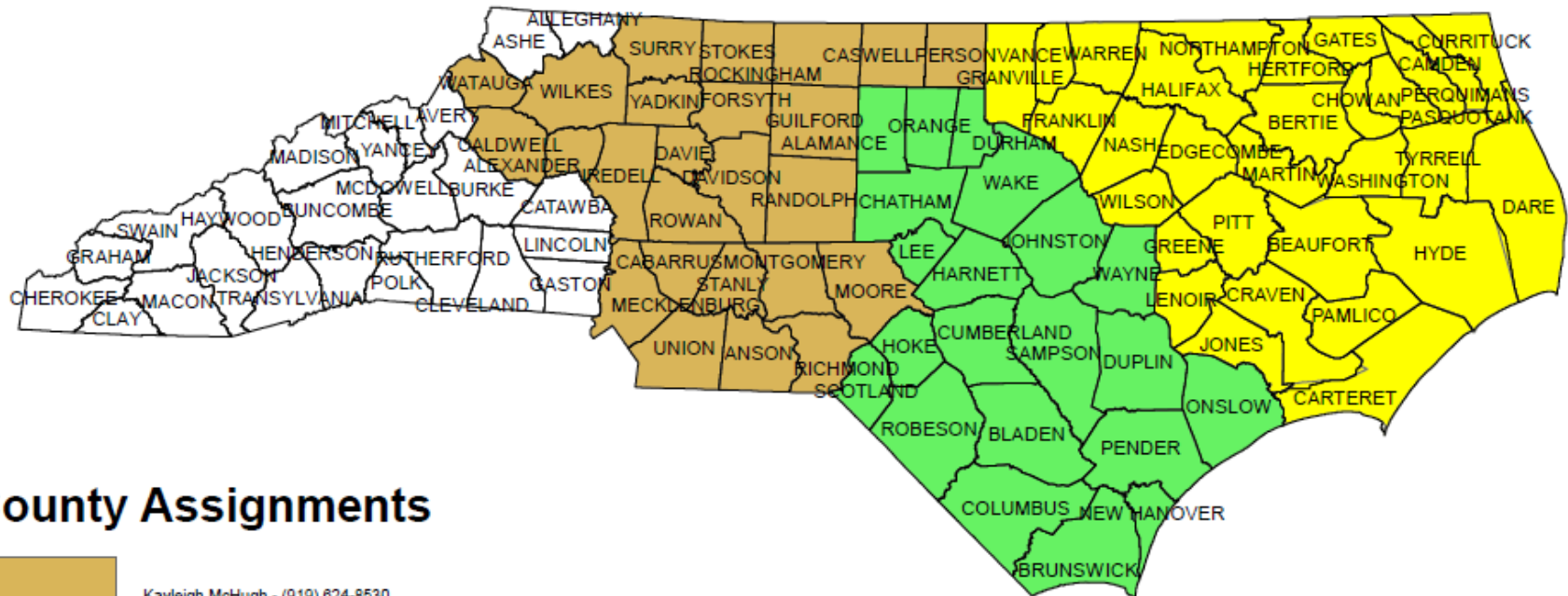
- ▶ CP3 (Shortleaf Pine)
- ▶ CP3A (Hardwood & Longleaf Pine)
- ▶ CP21 (Filter Strip)
- ▶ CP22 (Riparian Buffer)
- ▶ CP23 (Wetland Restoration)
- ▶ CP31 (Bottomland Timber)

Contact your CREP specialist

Program Manager

Eric Galamb-(919) 707-3780

CREP Specialist County Assignments



County Assignments



Kayleigh McHugh - (919) 624-8530



Matt Safford - (919) 707-3783



Lee Cannady - (252) 948-3904



Not a CREP County

Check <http://www.ncagr.gov/SWC/easementprograms/CREP/index.html> for current assignments

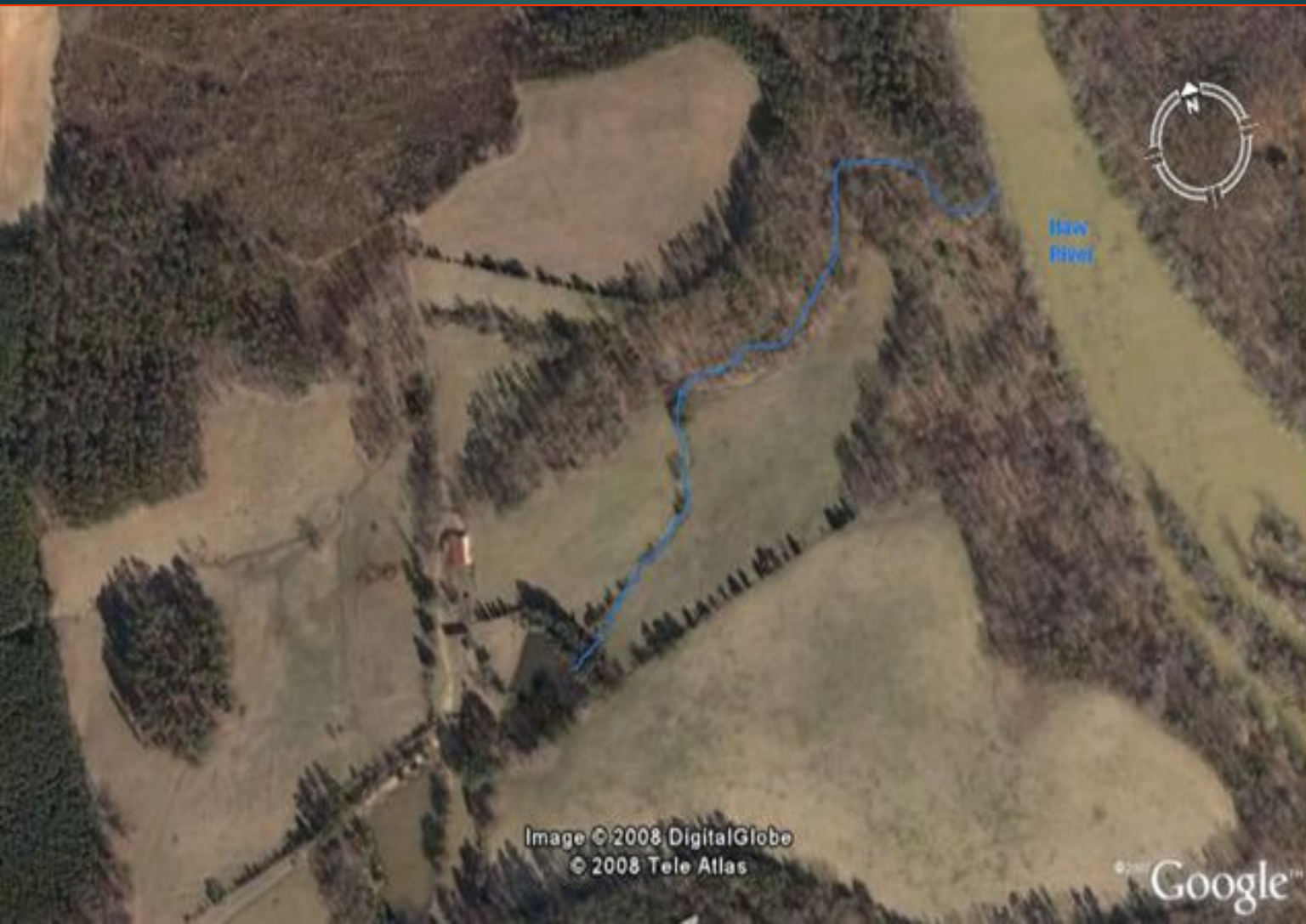
Cost Share Rates for CREP

- ▶ 10 year contract- Federal 50% / State 25%
- ▶ 15 year contract- Federal 50% / State 30%
- ▶ 30 year easement- Federal 50% / State 40%
- ▶ Permanent Easement – Federal 50%/ State 50%

This rate is for all components associated with the practice(s). Caps still apply.

Funds are pulled from CREP cost share earmark and DO NOT effect district annual allocation.

Cost Share Rates CAN be higher for those entering into longer agreements.



Example:

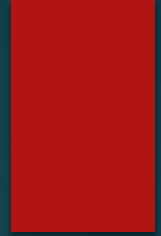
5 acres
Permanent
Conservation
Easement



Example:

5 acres
Permanent
Conservation
Easement

Comparing Program Options



ONLY STATE COST SHARE

\$14,104

Landowner receives
\$18,700 more
when funds are
combined.

LEVERAGING FUNDS WITH CREP (Federal and State)

FSA Cost Share
\$9,402

ACSP Cost Share
\$9,402

Soil Rental Payments
\$9,000

Easement Payment \$5,000

TOTAL \$32,804

For more information

- ▶ Contact your local conservation district office:
www.ncagr.gov/SWC/findyourdistrict.html
- ▶ NCDA&CS Division of Soil & Water Conservation
www.ncagr.gov/SWC
919-707-3770
- ▶ CREP Website:
<http://www.ncagr.gov/SWC/easementprograms/CREP/index.html>