



LANDSCAPE

landconservationsoftware.com

A Training Demo for NC Soil & Water District Staff

Lisa Shealy, Working Lands Trust

Michael Madole, Landscape

July 14, 2022



Introductions: Lisa Shealy

- 17+ years of Land Trust experience
- 20+ years of GIS experience
- 2+ years of government agency experience at federal, state, and county levels
- 3+ years of private consulting
- Completed 150+ conservation easements totaling nearly 100,000 acres
- Produced 120+ Baseline Documentation Reports for conservation easements (including Lowcountry Land Trust, Audubon South Carolina, WLT, GA-AL Land Trust, TNC GA; Supervised production of additional 50+ BDRs for conservation easements
- Managed stewardship of a conservation portfolio of 500+ property interests

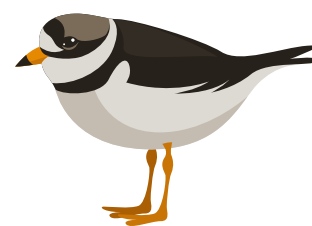


- M.S. Environmental Studies, College of Charleston
- B.S. Biology, B.S. Ecology, University of Georgia
- Certified Remote Pilot (USDOT/FAA)
- Certified Geographic Information Systems Professional (GISCI)



Introductions: Michael Madole

Michael is Account Manager of Dendroyka LLC. He came to Landscape from the Trustees of Reservations, where he helped modernize their easement stewardship program, which oversees the largest private portfolio of easements in Massachusetts. Before that, Michael served as an Americorps land steward at a small regional land trust in Western Massachusetts. When Michael's not helping onboard new clients, writing knowledge base articles, or responding to tech support questions, he can be found in the woods with his horse Hazel practicing low impact forestry as Hilltown Horse Logging.



Thank you



NC FOUNDATION for
SOIL & WATER
CONSERVATION



NORTH CAROLINA
SOIL & WATER
CONSERVATION DISTRICTS

Yours for Life



LANDSCAPE

land**conservation**software.com




WORKING LANDS TRUST



Agenda



10:00	Welcome:	Introductions/Agenda
	Presentation:	Landscape Overview & Primary Features
		Landscape Record Types: Properties, Projects & Funding
		Contact Management
		Landscape Products: Forms, Views & Reports
		Document Storage
		Site Visits
		Mapping & Photos
	Demo:	Track and Assess Prospective Conservation Opportunities
	Break:	10 min
11:00	Demo:	Inventory and Monitor Existing Conservation Interests
	Presentation:	Monitoring Workflow
	Video:	Mobile App Video
	Demo:	Knowledge Base
		Q & A
12:00	Wrap Up:	Complete Survey & End





What is **LANDSCAPE** ?

- Tools (database software and mobile app) for conservation acquisition and stewardship
- Created and administered by former land trust staff
- Used by over 180 land trusts and government agencies
- Manages records for ~7.5M acres (and counting....)





LANDSCAPE



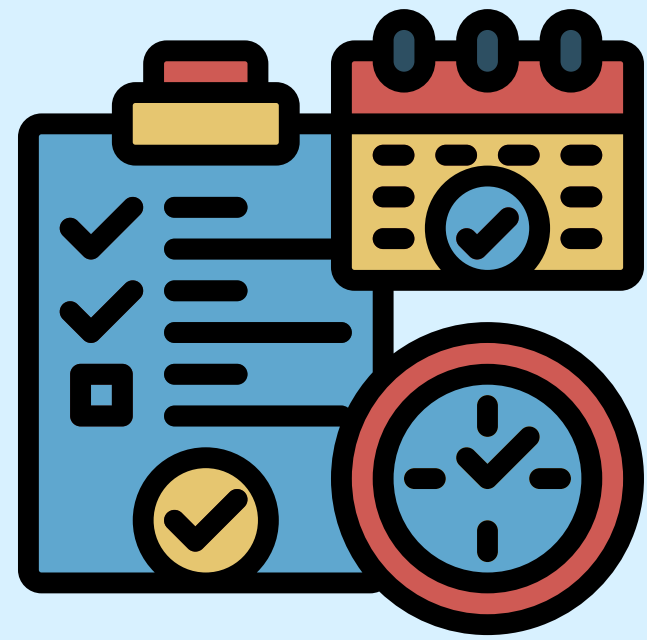
Michael



Caleb



Dan



Project Management

- Task lists to track due diligence on acquisitions, restorations, and stewardship projects.
- Track budgets, funding sources, and expenses
- Assign tasks. Visualize project tasks on a timeline. Receive email alerts about upcoming deadlines

Mapping

- View your GIS data alongside the Landscape records you're using to capture information.
- Import shapefiles, geotagged photos, .kml or .gpx files. Export shapefiles or .kml files for further processing with GIS software
- Query publicly hosted map layers (county parcels, wetlands, or rare species habitats (if available in your area)





Data Summary & Reports

- Views allow you to query, group, sort, count, and summarize your data.
- Reports allow you to merge any data in your account into a .pdf format.
- Send reports to others for review and finalization

Document Storage

- Intuitive document storage design.
- Upload documents directly to Landscape and access anywhere – 100GB of storage (more with additional fee)
- Integrate with cloud storage solutions like Google Drive™, Sharepoint™, and DropBox™





Contact Management

- Link contacts to properties and other records
- Use Landscape's contact management system alone, or with CRM tools like Little Green Light™ or Salesforce™

Mobile Site Visits

- Navigate properties, take photos, and fill out forms with or without data connectivity. Offline data collection with iOS or Android devices.
- Easements, BDRs, past monitoring reports, photos, current/past issues, notes and monitoring tracks are available at your fingertips.
- Automate the creation of monitoring reports and baseline report photo sheets in minutes!



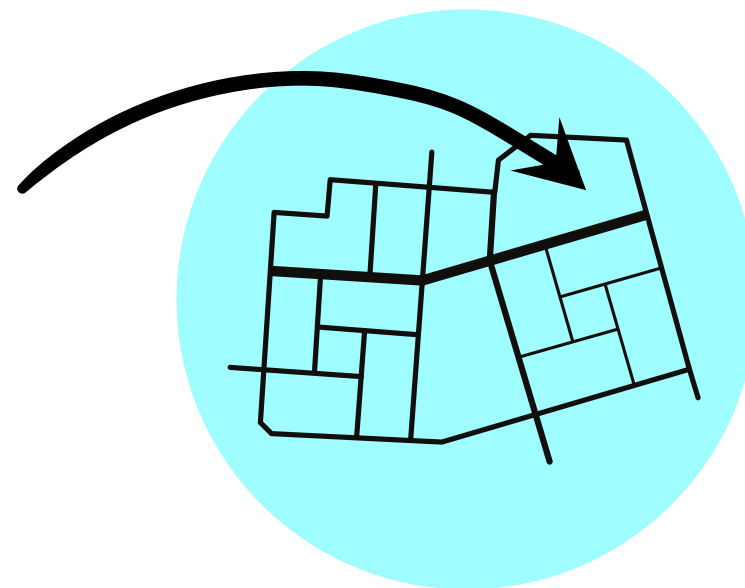
Landscape Record Types

Geographical

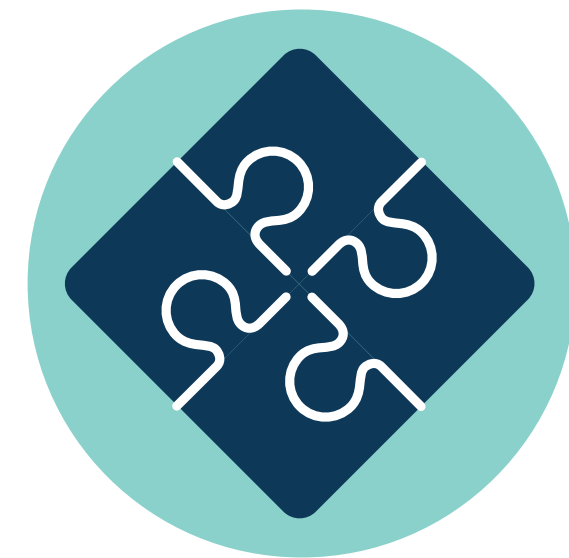
Property



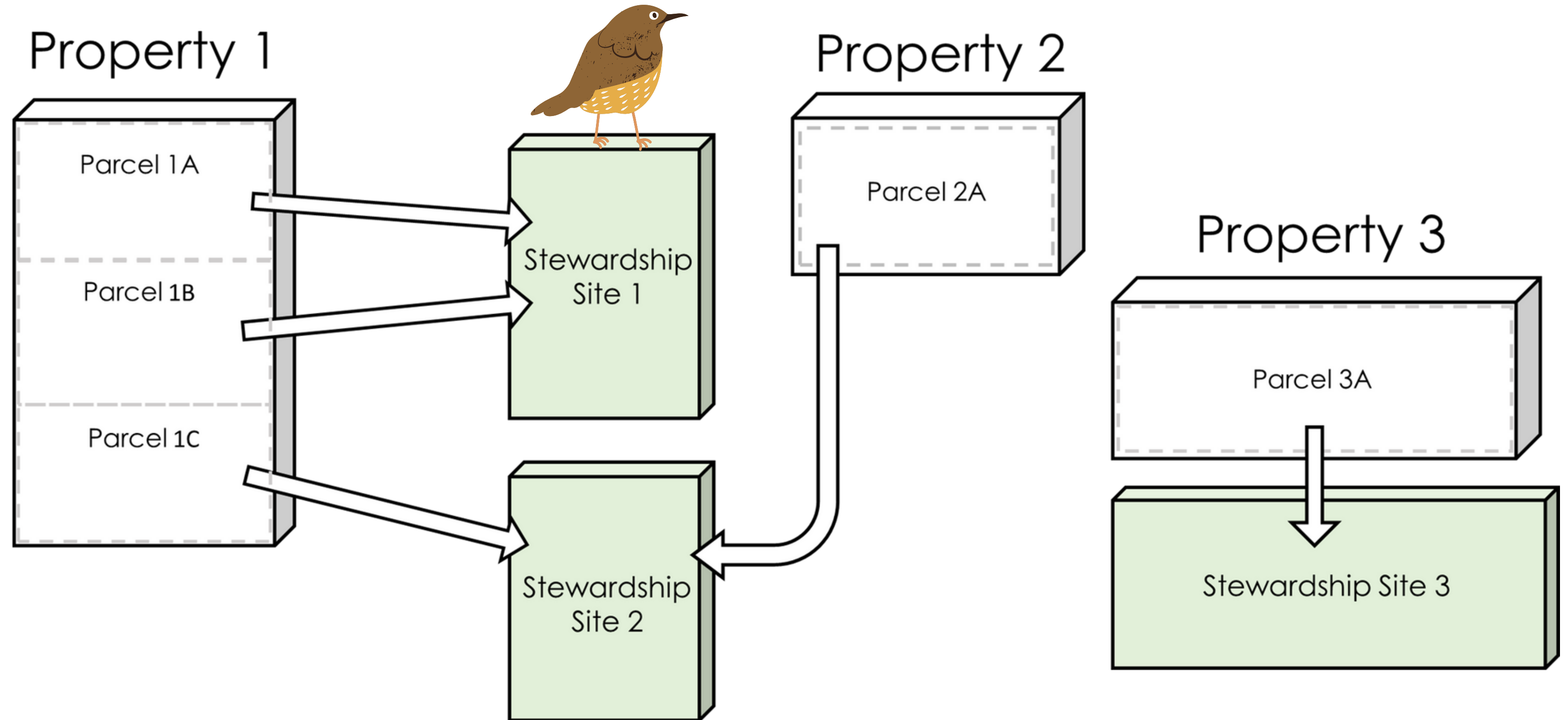
Parcel



Stewardship Site



Properties, Parcels, and Stewardship Sites: Organizational Structure








Landscape Record Types

Project
Management



Project Design

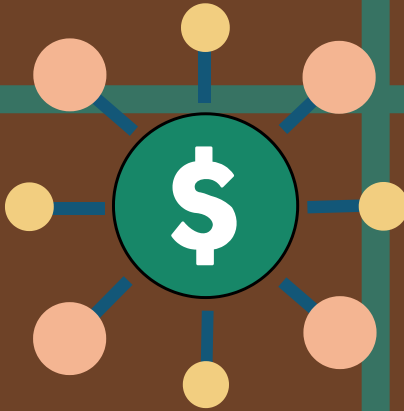


Goals 	Tasks 	Assignments 	Timeline 	Budget 
Units of a Project; a particular set of tasks and budgets related to something you are trying to accomplish.	Track what needs to be done, by whom, and by when. Components of checklists; view/edit also within the timeline feature.	Tasks can be assigned to individuals with deadlines, with the option to generate notices and alerts.	Visualize expected and completed project goals and tasks over a timeline with specific dates and/or ranges.	A list of items with costs and a particular cost category (used to match future expenses to your budget lines).

Landscape Record Types

Funding
Management



Funding Design

Sources	Agreements	Disbursals
 <p>A source of funds that you rely on regularly. (e.g. ADFP, NRCS, DoD, County, or Internal, etc.)</p>	 <p>An agreement (formal or informal) for an amount of funds from a source; can involve one or more projects or properties</p>	 <p>A placeholder/record for actual exchange of funds</p>

Contacts & Communications



- Contacts can be associated with Properties at the Parcel level
- Communications are tracked by Contacts and/or Property



Data Collection & Outputs

Data Analysis & Products

Views & Reports



Forms

A way to ask the same questions over and over for multiple records that may have answers changing frequently (annual monitoring site visit observations); can be merged along with other data into a report

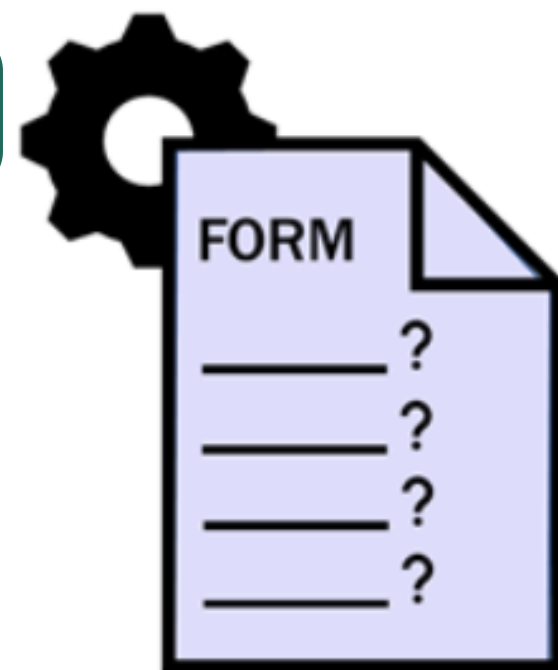
Views

Any of the data in your account can be viewed, sorted, grouped, filtered, or queried using Views; can be turned into maps or widgets, saved or shared

Reports

Merge any data contained within Landscape into a customizable report template; can be generated for an individual record, or in bulk using Views

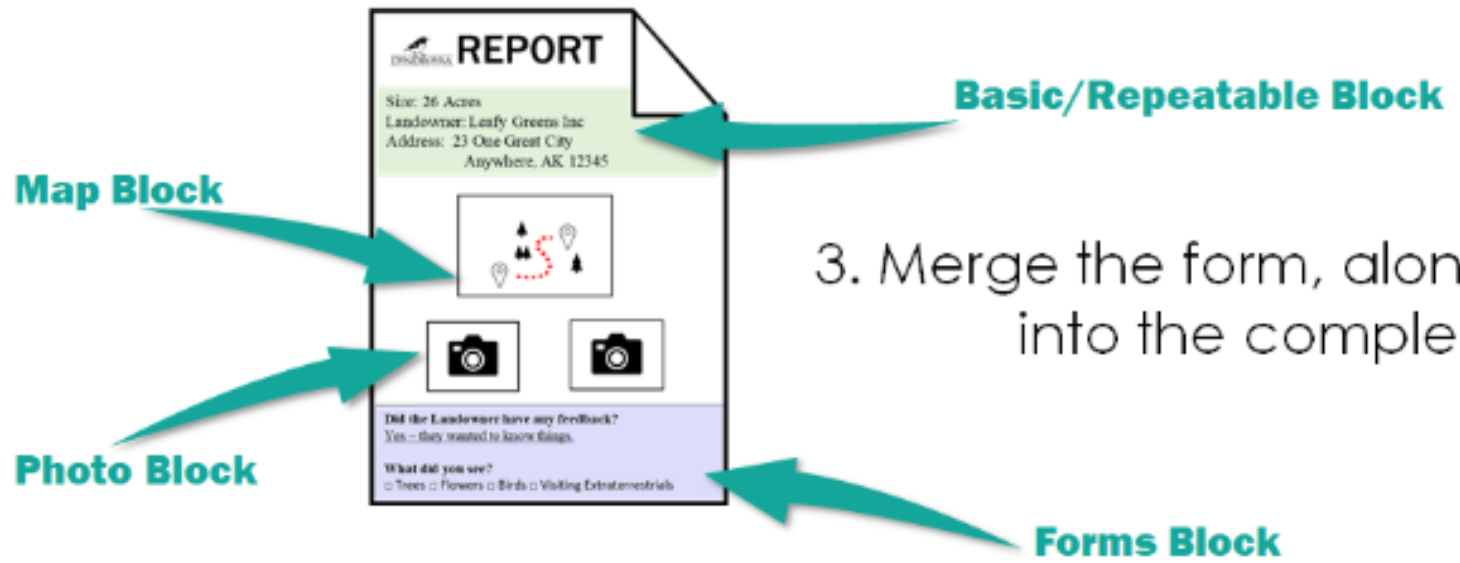
How Forms are used in Landscape



1. Build your form in settings



2. Fill out the form from within a Site Visit on the Desktop or Mobile App



3. Merge the form, along with other data, into the completed Report

Document Storage/Assets

- Site Assessment
- Appraisal
- BDR
- Contract
- Deed/Easement
- Title Policy
- Management Plan
- Survey
- Approvals



Google Drive





Site Visits

- Navigate
- Take GPS Photos
- Track Route
- Review Documents
- See Past Data
- Fill out Form
- Map areas/points of interest--new structure or timber harvest



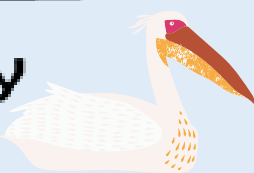
Mapping & Photos



- Import/export GIS data and geotagged photos
- Create points, lines and polygons from your desk or in the field
- Toggle past photos and current photos on and off
- See all photos for a property in a gallery
- Link GIS layers to specific data/records (Issues, Conservation Values, etc.)
- Create printable maps
- Create a public map for your website



Mapping in Landscape



Parcel Boundary

(Area Only)
Defines Area of Interest (AKA Easement Boundary, Fee Boundary, etc.)
Defines the Stewardship Site and Property Boundaries

Automatic Layers:

Outer Property Boundary
Outer Stewardship Site Boundary
Nearby Boundaries

Custom Layers

Watershed Boundaries
Parking Points
Basemaps*
Protected Open Space*
Parcels*

*Service Layers

Stewardship Site

Site Visits

Monitoring Tracks
Site Visit Tracks
Photopoints
(Collected with the App)

Structures / Uses

Trails
Restricted Structures

Stewardship Site Specific Layers

Monitorable Areas within Easement Buffer zones

Leases

Leases
3rd Party Easements

Issues

Encroachments
Invasive Species

Project Goals



Restoration Areas
Proposed Building Zones

Property

Site Visits

Assessment Visit Tracks
Photopoints
(Collected with the App)

Property-Specific Layers

Building Envelopes
Excluded Zones
(Recorded as part of interest)

Amendment Areas

Amendment Assets

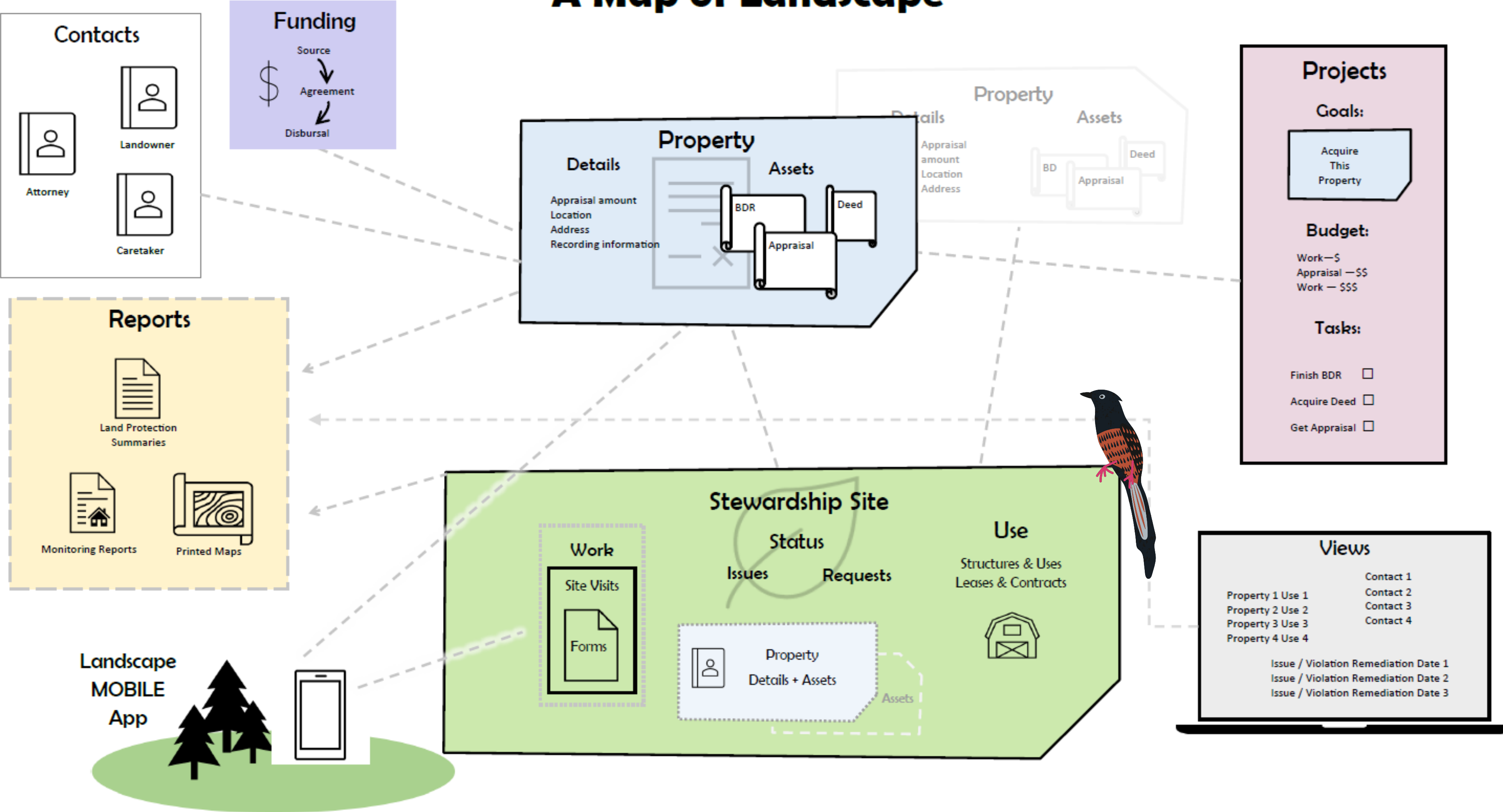
Conservation Values

Acres of Farmland
Acres of Wetland
Feet of Shoreline
Feet of Road Frontage
Rare Species Habitat

Baseline Reports

Baseline Asset
Baseline Photopoints
Vegetation / Species

A Map of Landscape





Track and Assess Prospective Conservation Opportunities: Acquisitions

Online Demo with WLT and DLT
Landscape accounts



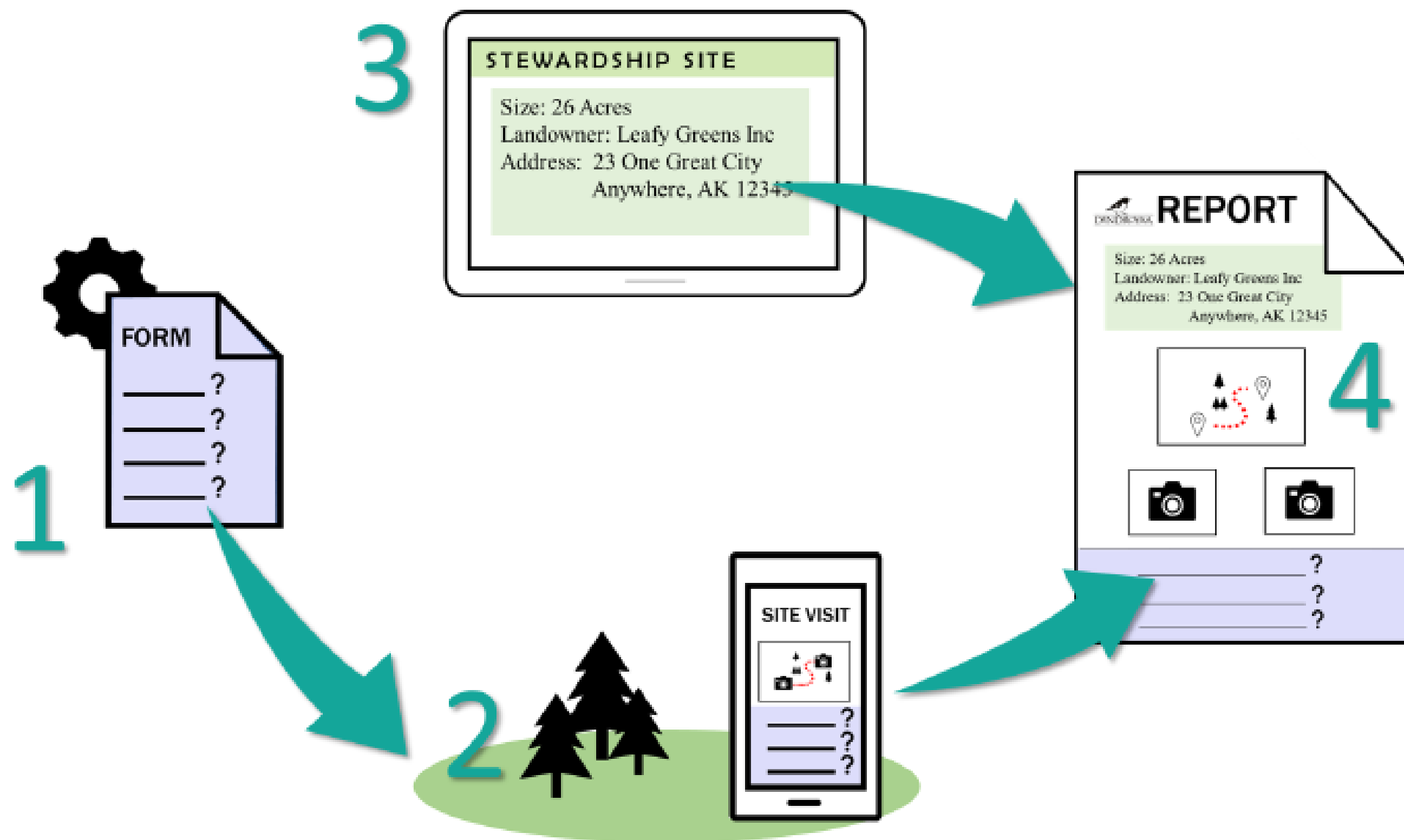


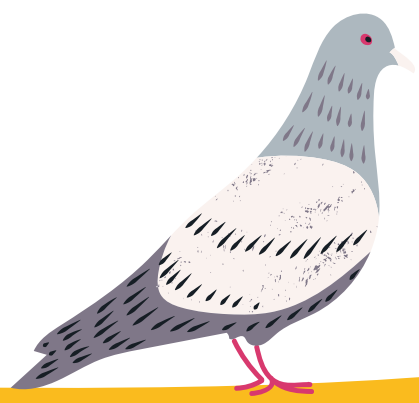


Inventory and Monitor Existing Conservation Interests—Stewardship

Online Demo with WLT and DLT
Landscape accounts

Typical Monitoring Workflow





Landscape Mobile 3 App

Landscape makes field monitoring of your conservation properties easy. Form data, geographic data, and photos can be collected on and offline and synchronized with your Landscape online subscription.

Landscape provides access to property data, current issues, prior years' monitoring data, baseline documents, and historical photos so you have a complete picture of the property you monitoring.



https://play.google.com/store/apps/details?id=com.dendroyka.landscape.mobile.v3&hl=en_US&gl=US

<https://apps.apple.com/us/app/landscape-mobile-3/id1547553047>



<https://dendroyka.zendesk.com/hc/en-us/articles/4827088331411-Volunteer-Monitoring-with-the-Landscape-Mobile-App-video->

Knowledge Base



<https://dendroyka.zendesk.com/hc/en-us>

Thank you!

Questions?

